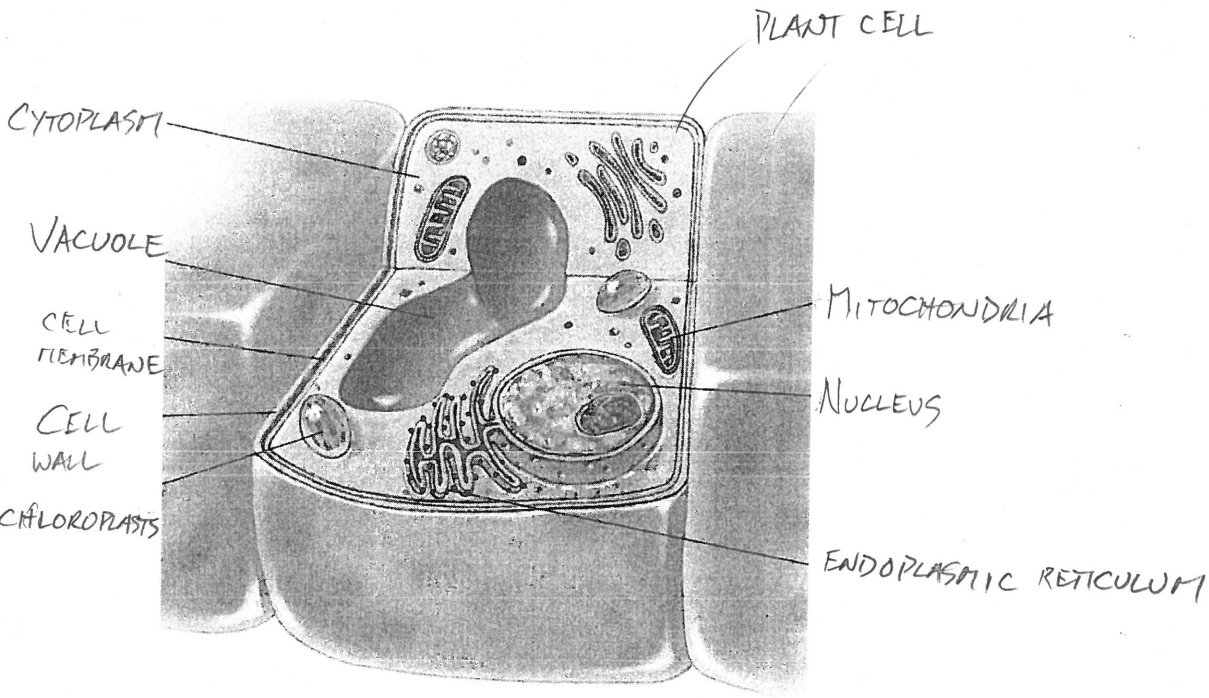
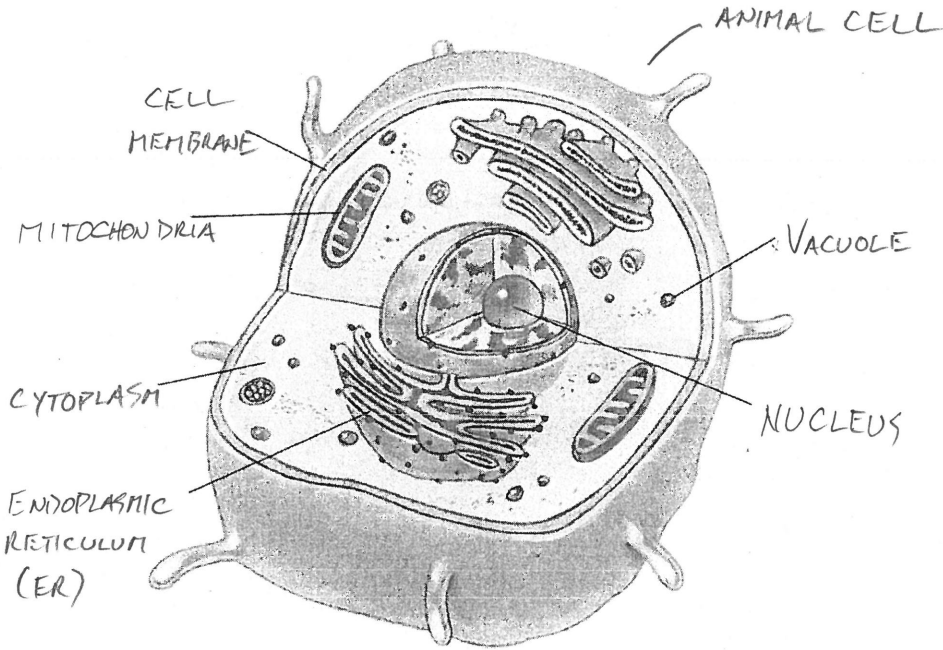


Animal and Plant Cell Diagram

Please know the parts of the animal and plant cells.



Study Guide for Science Cell Test

- 1 - Know the differences between an animal and plant cell.
- 2 - Definition of cell terms.
- 3 - How to identify a plant or animal cell when given a diagram.
- 4 - Know the function of cell parts.
- 5 - Thinking and applying your cell knowledge questions. For example, as multi-cellular organisms grow, do their cells grow in size as well? Why or why not? If not, explain what happens.
- 6 - Fill in the blank questions.